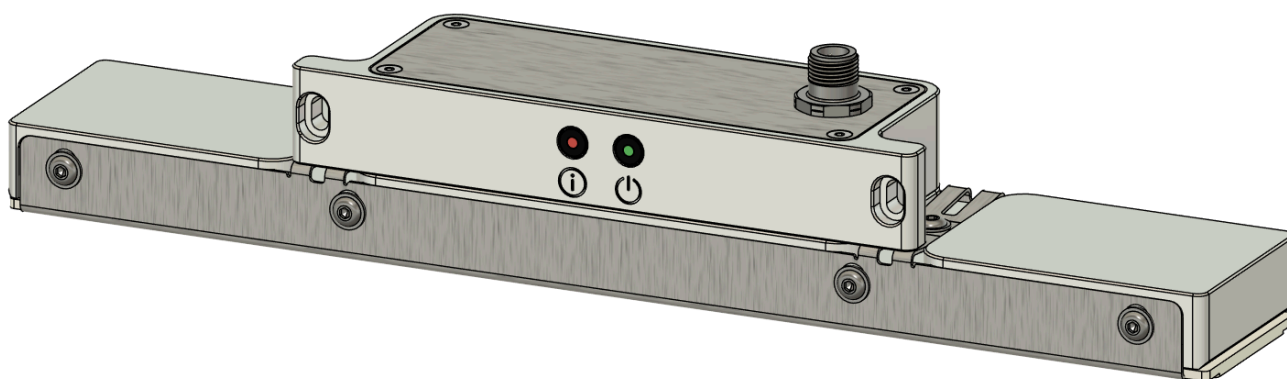


B19.300.1 Integrated Electrode

DATASHEET - V250603A

The B19.300.1 electrode is a 300mm x 60mm electrode for powder bed leveling and defect correction. It can correct powder bed defects approximately 2mm or smaller. The B19.300.1 electrode is designed to level 300mm or ~12" wide powder beds in a sweeping motion up to 350mm/s (or more, with reduced defect correction). This electrode has an integrated controller and thus does not require a separate controller to operate.

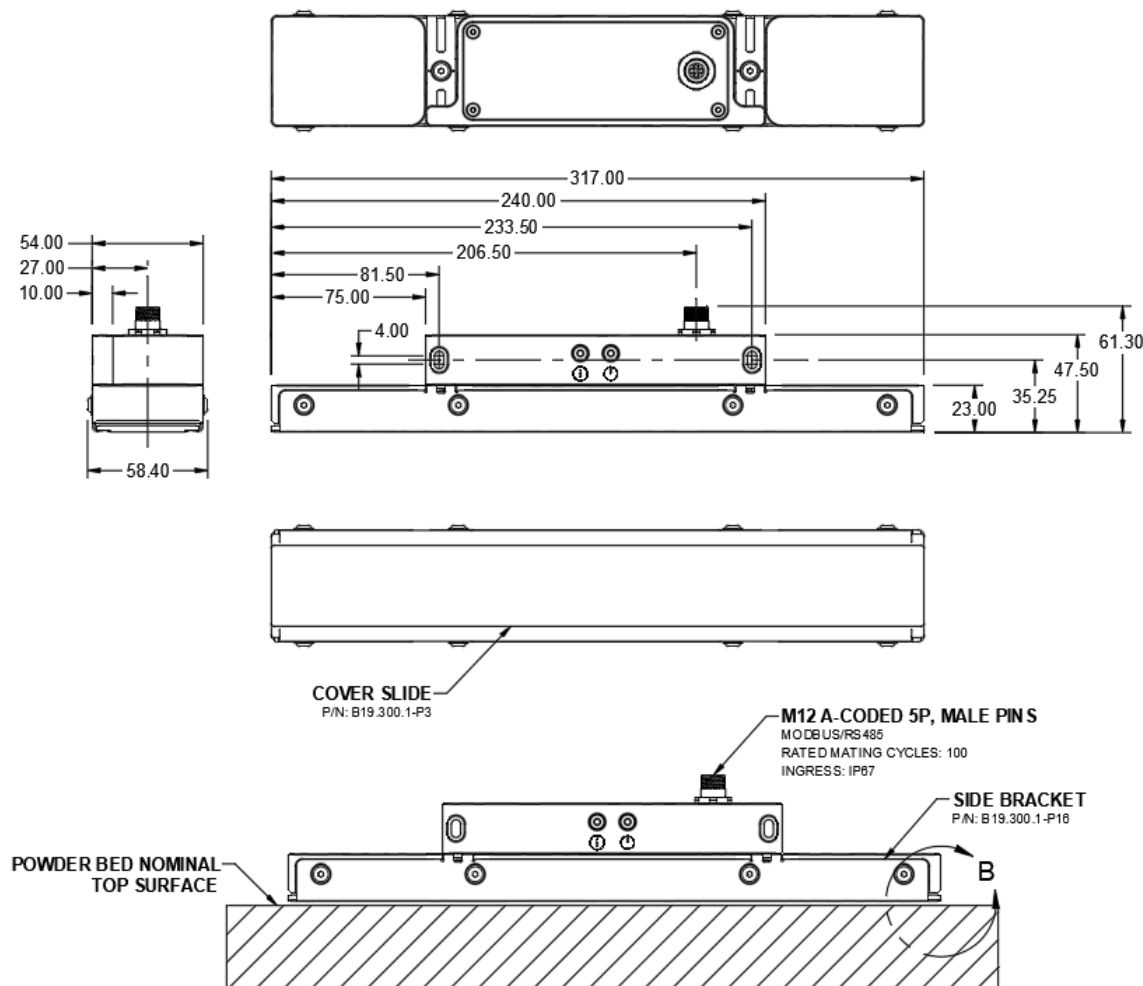


Specifications

Maximum Recommended Recoating Speed	350 mm/s
Electrode Overall Dimensions	317mm x 58.4mm x 61.3mm
Compatible Gases	Argon, Nitrogen, CO ₂ , Helium gas blends
Disconnect Port	Standard M12, 5-pin, A-Coded
Mean Particle Size Range	10 to 350 micron
Particle Material Volume Resistivity (Min)	1x10 ³ ohm-meter (all metals, some ceramics)
Recommended Standoff Distance	1-3mm
Coverslide Material	Delrin, PEI, PVDF, or application-specific
Frame Material	Anodized aluminum, 304 stainless
Interface Protocol	MODBUS RTU / RS485

Mechanical Drawing

300MM INTEGRATED ELECTRODE
B19.300.1



CONNECTOR PINOUT

SIGNAL	PIN	COLOR (TYP)
EARTH GND	1	BROWN
+24V	2	WHITE
SIG GND	3	BLUE
D+	4	BLACK
D-	5	GREY

